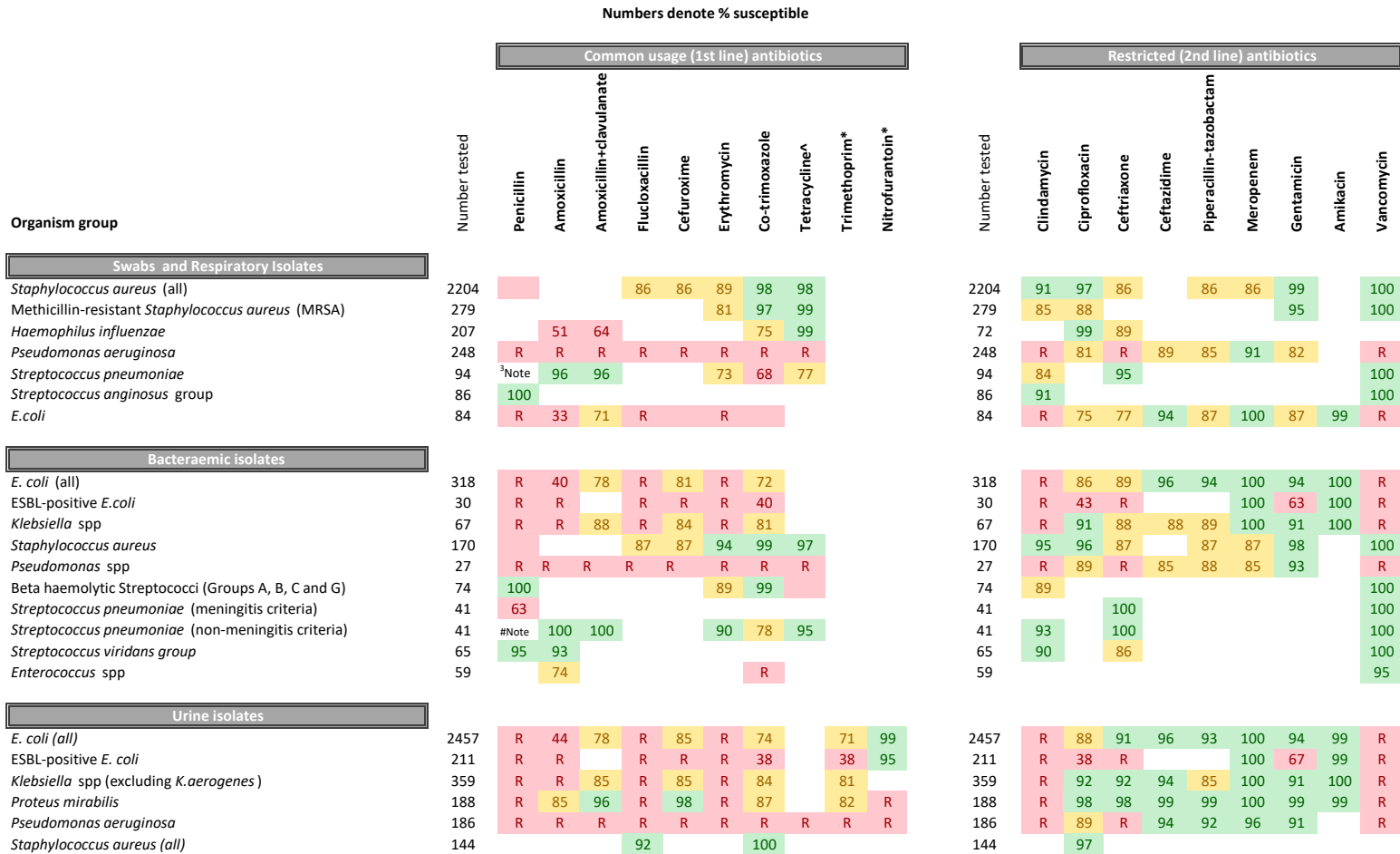


Waikato DHB cumulative antibiotic susceptibilities (antibiogram) (Compiled October 2021, based on 2020 annual data)



\*recommended for uncomplicated UTI isolates only

<sup>^</sup>Isolates that are Tetracycline susceptible can also be considered susceptible to Doxycycline

<sup>3</sup>Note: 46% of Isolates fully susceptible to Penicillin (MIC ≤0.06g/L) a further 45% had MIC values between 0.12g/L and 2g/L. 9% had MIC values >2g/L and would be classed as "Resistant" using current EUCAST guidelines

R = always resistant

<sup>#</sup>Note: 63% of *S.pneumoniae* isolated were fully susceptible to Penicillin (MIC ≤0.06g/L). The remaining 37% had MIC values between 0.12g/L and 2g/L. No bacteraemic isolates of *S.pneumoniae* isolated in 2020 were

